

# Experience Exceptional Medical Device Design and Manufacturing Solutions



**Cirtec Medical is a leading vertically integrated, full-service outsource partner for complex Class II and III medical devices.**

With over 30 years of expertise, we have a proven track record of being the preferred partner for OEMs looking for innovative development for life-enhancing therapies. From design and process development to prototypes and manufacturing, we provide comprehensive solutions to bring complex products to market.

At Cirtec, we have the resources and expertise to fast-track your program, ensuring speed, efficiency, reliability, and cost-effectiveness. We work with you every step of the way, bringing your product to market as quickly as possible, without jeopardizing quality.

We service a variety of healthcare markets, including cardiology, neurology, and orthopedics. We also offer precision components for complex medical device development. From pilot programs and clinical builds to full-scale production, we are committed to meeting your specific needs.

## Count on Us as Problem Solvers You Can Trust to:

- Help you achieve your cost of goods targets
- Identify manufacturability issues before they impact production or strain your budget
- Improve efficiency through vertical integration
- Save you money and resources by managing your supply chain
- Scale on demand, from batch production to high-volume finished goods
- Minimize or avoid fixed operational costs





## Neurology Solutions

Cirtec stands at the forefront of neuromodulation, providing a holistic suite of solutions. From IPGs and leads to advanced software solutions, we deliver end-to-end implantable neuromodulation offerings for these applications:

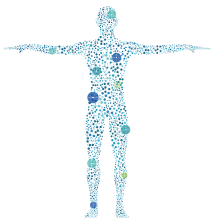
- Neuromodulation
- Brain Computer Interface
- Blood Clot Retrieval
- Endovascular Coiling
- Hypoglossal Nerve Stimulation
- Spinal Nerve Stimulation
- Sacral Nerve Stimulation
- Vagus and Peripheral Nerve Stimulation
- Closed Loop Solutions for Neuro Sensing and Stimulation



## Cardiology Solutions

Cirtec offers comprehensive interventional cardiology solutions with a strong focus on rapid prototyping and full vertical integration including complex extrusion, balloon forming, micro and smart catheters.

- Interventional Catheters
- Implantable Drug Delivery Systems
- Cardiac Rhythm Management
- Neurovascular Stents and Coils
- Heart Valves
- TAVR
- TTVR and TMVR Stents



## Precision Components

Specializing in complex, difficult to produce components, Cirtec has developed innovative medical machining processes and advanced tooling systems to manufacture medical device assemblies with the highest level of quality and efficiency.

- Machining and Swiss Turning
- Precision Stamping
- Coil Winding
- Hermetic Welding and Testing
- Nitinol Tubing and Processing
- ASICs, PCBs, Thin-Film Circuits, and Sensors
- Braiding and Coiling
- Balloon Forming
- Extrusion and Finished Device Assembly
- Silicone/Elastomer Molding and Extrusion



## Orthopedic Solutions

Today's active orthopedic solutions benefit from Cirtec's depth of experience with implantable smart devices. Smart orthopedic implants allow for the integration of a looped ecosystem where patient and device data can be transmitted and remotely monitored by care providers. Orthopedic OEMs rely upon Cirtec's technology and manufacturing expertise for capabilities including:

- Custom Titanium Components and Enclosures
- Micro-PCB Soldering/Assembly
- Micro-electronics Assembly
- Antenna Stamping and Assembly
- RF Signal Calibration
- Gyroscope/Motion Alignment and Calibration
- Device Firmware
- Software Design and Testing

# Cirtec's Dependable Strengths

## Rapid Prototyping

In the fast-paced world of healthcare technology, rapid prototyping is a vital tool which offers valuable feedback, reduces development time and costs, and boosts customer satisfaction. With expertise in rapid prototyping, Cirtec keeps projects on track and within budget, allowing for accelerated development cycles and top-notch products. By embracing rapid prototyping and DFX practices, Cirtec helps OEMs remain competitive and thrive in the ever-changing medical device industry.

## A Bias for Process Development

Cirtec is your trusted partner in process development, revolutionizing medical device manufacturing with precision and efficiency. By partnering with Cirtec you will benefit from:

- Seamless transition from design to production
- Optimal efficiency through rigorous methodologies
- Consistent high-quality production adhering to regulatory standards
- Value engineering for cost reduction without compromising safety
- Scalable manufacturing processes ready for growing demand
- Comprehensive risk management prioritizing product quality
- Continuous improvement for enhanced efficiency

## Vertical Integration

Our extensive in-house capabilities make us a single source for clients looking to turn a technology or product idea into a life-changing medical device.

Vertical integration offers significant benefits in terms of cost control, timing, and quality. By controlling the parts used in device assembly, we can reduce costs by avoiding stacked margins and expedite time to market, saving customers money on overhead expenses. Additionally, vertical integration simplifies the customer's supply chain management. Our unique advantage lies in designing and manufacturing, from low volume to high volume, all in the same site thereby eliminating the need for costly transfers to other locations.

## Elevating Device Manufacturing

With our extensive network of cutting-edge facilities, we manage your R&D and commercial manufacturing requirements without interruption. Equipped with ISO 14644-1 Class 7 and Class 8 certified clean rooms, we ensure optimal production conditions from pilot builds to full-scale manufacturing.

Our sites hold ISO 13485:2016 or ISO9001:2015 certifications, guaranteeing world-class quality management.

## Advantages of our End-to-End Manufacturing Support:

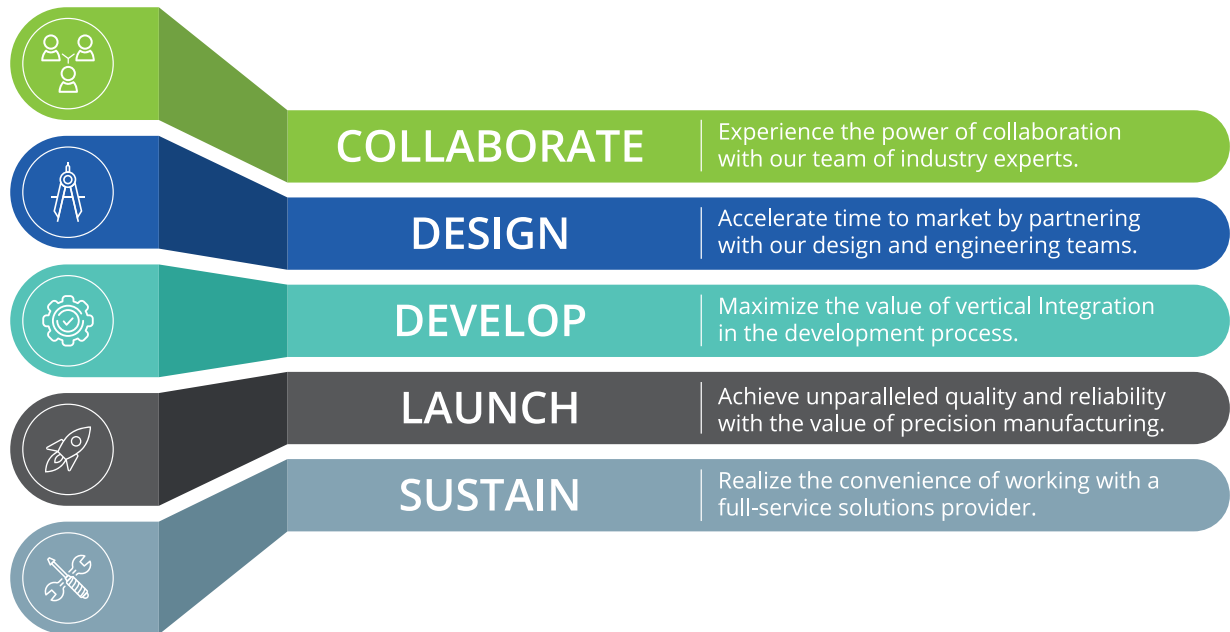
- Designing products with foresight, considering process and production from the start
- Proactively identifying and resolving potential issues before they present problems
- Streamlining supply chain management for cost reduction and time savings
- Maximizing efficiency through vertical integration and centralized services, delivering on cost of goods targets
- Adapting production capacity to evolve with your project
- Leveraging our global presence to avoid fixed operational costs



## Experts at Manufacturing Transfer

Our global team of experts ensures a seamless transition, duplicating manufacturing lines and supplying complex devices and components. We handle packaging, labeling, and sterilization for direct delivery to your desired location. Expand your manufacturing capacity, optimize yields, and preserve capital with our flexible options. We minimize supply chain risks, enhance quality, and extend the lifecycle of your product, improving margins along the way.

With dedicated transfer teams, low-cost manufacturing locations, cleanrooms, and precision metals processing, we have the capabilities to meet your needs. Expedited validations and dedicated program managers guarantee a smooth process. Make the move to Cirtec and experience a simplified, efficient medical device manufacturing transfer that puts you ahead of the competition.



## A Smarter Way to Build

Cirtec's global footprint and operations in lower cost regions combined with our in-house expertise in component design, process development, and manufacturing ensures your project results in a

high-quality finished device. Our diligent testing, validation, and final production stages ensure unrivaled results which allow you to reliably scale.



Discuss Your Program Needs Today

[Cirtecmed.com/contact/](https://Cirtecmed.com/contact/)

